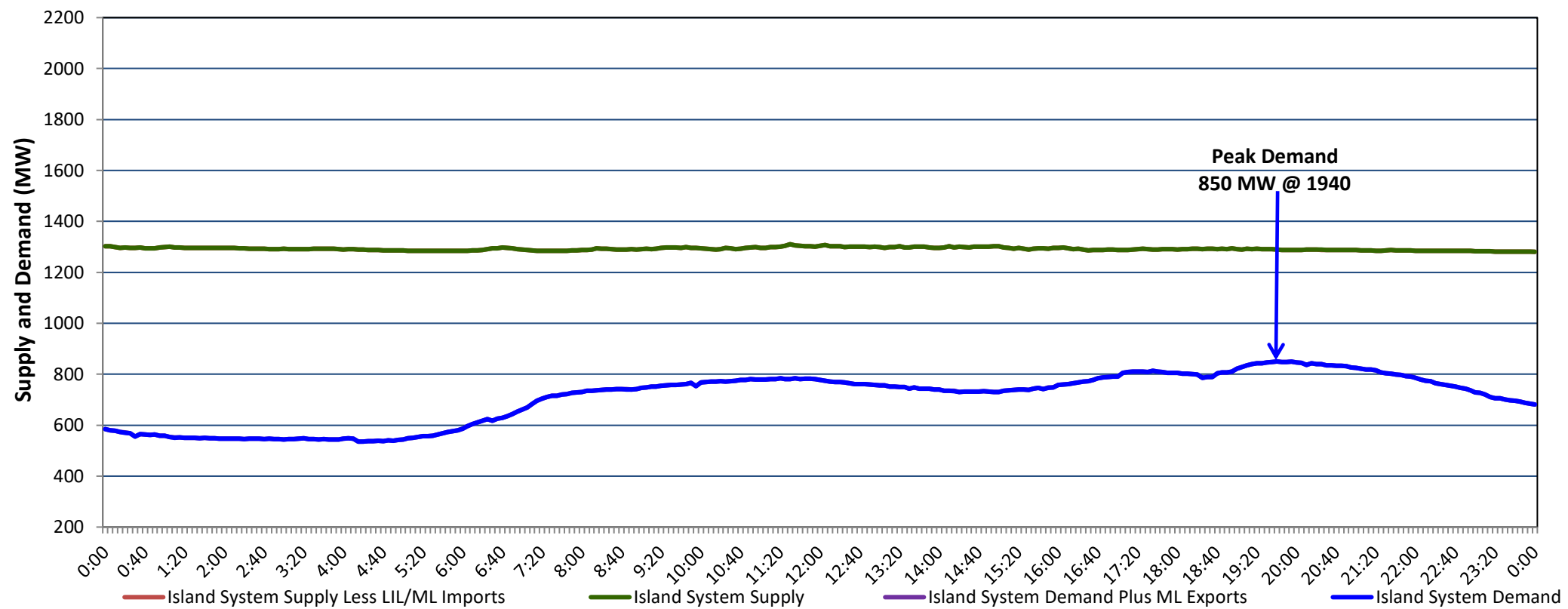


## Newfoundland Labrador Hydro (NLH) Supply and Demand Status Report Filed Tuesday, September 26, 2023

### Section 1 Island Interconnected System Supply, Demand & Exports Actual 24 Hour System Performance For Monday, September 25, 2023



#### Supply Notes For September 25, 2023 <sup>1,2</sup>

- A As of 0701 hours, March 06, 2023, Upper Salmon Unit unavailable (84 MW).
- B As of 0800 hours, May 21, 2023, Holyrood Unit 2 unavailable due to planned outage (170 MW).
- C As of 0800 hours, July 09, 2023, Holyrood Unit 1 unavailable due to planned outage (170 MW).
- D As of 2059 hours, July 13, 2023, Stephenville Gas Turbine unavailable (50 MW).
- E As of 2238 hours, July 25, 2023, Bay d'Espoir Unit 6 unavailable (76.5 MW).
- F As of 1403 hours, September 20, 2023, St. Anthony Diesel Plant available at 7.7 MW (9.7 MW).
- G As of 2219 hours, September 23, 2023, Holyrood Unit 3 available but not operating (150 MW).

### Section 2 Island Interconnected Supply and Demand

Tue, Sep 26, 2023	Island System Outlook <sup>3</sup>	Seven-Day Forecast	Temperature (°C)		Island System Daily Peak Demand (MW)	
			Morning	Evening	Forecast	Adjusted <sup>7</sup>
			Available Island System Supply: <sup>5</sup>	1,270 MW	Tuesday, September 26, 2023	8
NLH Island Generation: <sup>4,8</sup>	990 MW	Wednesday, September 27, 2023	8	9	845	845
NLH Island Power Purchases: <sup>6</sup>	75 MW	Thursday, September 28, 2023	12	9	815	815
Other Island Generation:	205 MW	Friday, September 29, 2023	10	10	785	785
ML/LIL Imports:	- MW	Saturday, September 30, 2023	11	11	760	760
Current St. John's Temperature & Windchill:	4 °C	Sunday, October 1, 2023	12	12	760	760
7-Day Island Peak Demand Forecast:	950 MW	Monday, October 2, 2023	13	14	770	770

#### Supply Notes For September 26, 2023 <sup>3</sup>

- Notes:
1. Generation outages for running and corrective maintenance are included. These are not unusual for power system operations. They generally do not impact customer supply. The power system operators schedule outages to system equipment whenever possible to coincide with periods when customer demands are low and sufficient supply reserves are available. However, from time to time equipment outages are necessary and reserves may be impacted.
  2. Due to the Island system having no synchronous connections to the larger North American grid, when there is a sudden loss of large generating units there may be a requirement for some customer's load to be interrupted for short periods to bring generation output equal to customer demand. This automatic action of power system protection, referred to as under frequency load shedding (UFLS), is necessary to ensure the integrity and reliability of system equipment. Under frequency events have typically occurred 5 to 8 times per year on the Island Interconnected System and the resultant customer load interruptions are generally less than 30 minutes. With the activation of the Maritime Link frequency controller during the winter of 2018, UFLS events have occurred less frequently.
  3. As of 0800 Hours.
  4. Gross output including station service at Holyrood (24.5 MW) and improved NLH hydraulic output due to water levels (35 MW).
  5. Gross output from all Island sources (including Note 4).
  6. NLH Island Power Purchases include: CBPP Co-Gen, Nalcor Exploits, Rattle Brook, Star Lake, Wind Generation and capacity assistance (when applicable).
  7. Adjusted for curtailable load, market activities and the impact of voltage reduction when applicable.
  8. Due to limitations inherent in the design of combustion turbines, the output of combustion turbines may be reduced in the event that ambient temperatures exceed the threshold

### Section 3 Island Peak Demand Information Previous Day Actual Peak and Current Day Forecast Peak

Mon, Sep 25, 2023	Actual Island Peak Demand <sup>9</sup>	19:40	850 MW
Tue, Sep 26, 2023	Forecast Island Peak Demand		950 MW

Notes: 9. Island Demand / LIL / ML Exports (where applicable) is supplied by NLH generation and purchases, plus generation owned and operated by Newfoundland Power and Corner Brook Pulp & Paper (Deer Lake Power, DLP).